

DARE TO CHALLENGE

ERMENRICH

measuring tools

Product Guide



# PRODUCT OVERVIEW

Ermenrich is a German brand with European and American distribution, serving customers in 40+ countries.

**Applications:** Construction, surveying, electrical work, plumbing, automotive, environmental monitoring, and more.

## Key Features

- Durable, wear-resistant materials
- User-friendly designs
- High measurement accuracy

## Current Portfolio

- 200+ models of measuring tools
- Future Development: Expansion into power tools and universal battery platform accessories



# KEY ADVANTAGES

- Reliability – Engineered for professional and household use
- Functionality – Practical solutions for diverse industries
- Global Reach – Internationally available
- Sleek design – Sophisticated packaging with multilingual user manuals
- German origin and approach
- Lifetime service and 5-year warranty
- Next-gen technologies for longer service life and superior operation

# PRIMARY APPLICATIONS



Country house construction



Home renovation  
and interior decoration



Land surveying and property zoning



DIY woodworking and carpentry



Electrical wiring testing



Temperature control  
and gas leak detection



# BRAND HISTORY

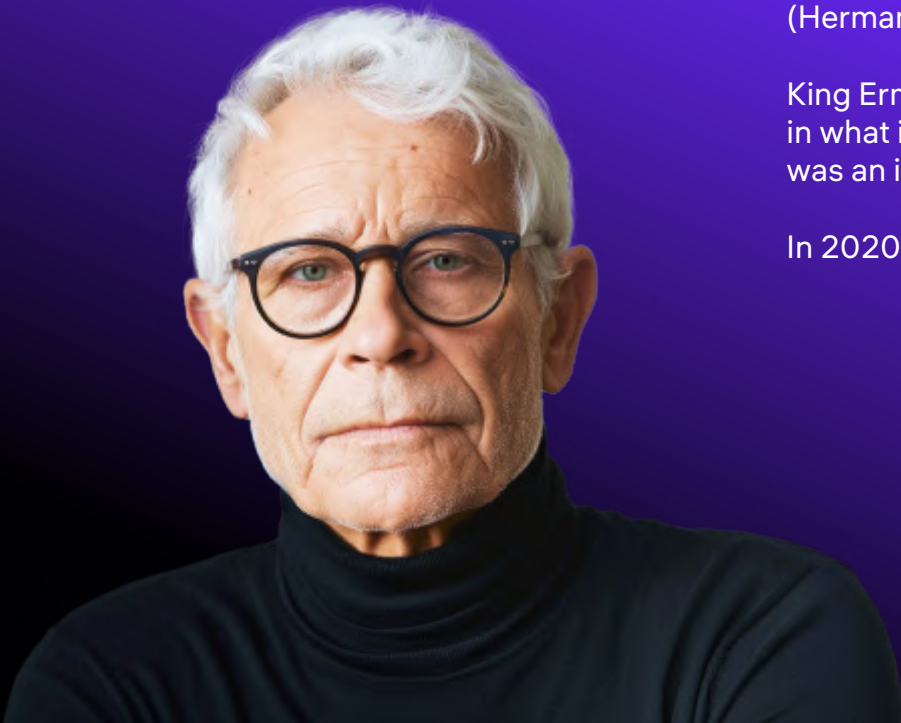
---

The brand was founded by Ulrich Hessmer, a German engineer who worked for many years for a well-known construction tool company. His vast experience in the construction industry allowed him to create a product of excellent quality.

Herr Hessmer is passionate about the history of Ancient Rome. He was always particularly interested in the Ostrogothic king Ermanaric (Hermanaricus).

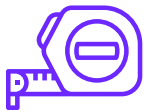
King Ermanaric is famous for having created the most powerful kingdom in what is now Central Europe in the fourth century AD. The king's name was an inspiration for Herr Hessmer's choice of company name.

In 2020, Herr Hessmer founded Ermenrich.

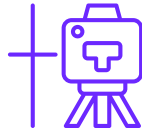




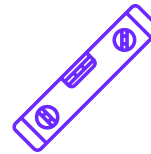
# MORE THAN 200 SKUs OF MEASURING TOOLS



**Tape Measures and  
Laser Meters**



**Laser and Optical  
Levels**



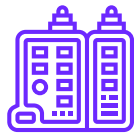
**Digital Levels and  
Angle Finders**



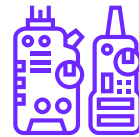
**Electrical Measuring  
Tools**



**Non-Destructive  
Testing Devices**



**Network Testing  
Tools**



**Stud Detectors**



**Moisture  
Detectors**



**Laser  
Rangefinders**



**Environmental  
Meters**



**Industrial  
Endoscopes**



**Radiation  
Detectors**



**Water Quality  
Testers**



# TECHNOLOGY IN ERMENRICH TOOLS

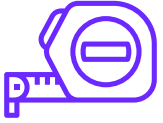
The Ermenrich brand of measuring tools and the German engineering laboratory IngeLAB have entered into an exclusive partnership to implement technologies improving the quality and usability of laser equipment and mobile mechanical systems.

**DührerSN** – technology for enhancing the quality and visibility of laser beams combines the high-precision manufacturing of optical components with mathematical modeling for optimal focus calculation.



**Schmieroll** – lubrication technology based on modern developments in the field of microparticles increases the service life of tools by reducing the friction coefficient and increasing the effective contact area of moving parts.





# DISTANCE MEASURING TOOLS

- Construction tape measures
- Laser meters
- Land measuring tapes and ruler tapes
- Measuring wheels





# Construction Tape Measures

Every home and toolbox should have one. Ermenrich tape measures provide precise measurements for:

- **Home projects** – Furniture arrangement, decor placement, appliance fitting
- **Renovations** – Accurate sizing for flooring, tiles, and materials
- **Professional use** – Dependable daily use for builders and contractors

## Durable Construction

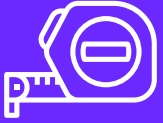
**Blade:** High-quality brushed steel for long-lasting performance

**Housing:** Impact-resistant casing with smooth retraction

**Protection:** Moisture-resistant design for reliable use in any environment

Tape measures employ Schmieroll lubrication technology – a proprietary system that extends product lifespan by reducing friction coefficients and increasing effective contact area between moving parts. Tools featuring this innovation are clearly identified by the Schmieroll logo in catalog on our web sites.





Model	KD30	KD50	KD80	KD100
SKU	82997	82998	82999	83000
Length of the tape blade	3m	5m	8m	10m
Width of the tape blade	16mm	19mm	25mm	25mm
Tape blade	single-sided	single-sided	single-sided	single-sided
Tape material	steel	steel	steel	steel
Magnetic hook	+	+	+	+
Self-locking	+	+	+	+

Model	SQ30	SQ50	SQ80	SQ100
SKU	84582	84583	84584	84585
Length of the tape blade	3m	5m	8m	10m
Width of the tape blade	16mm	19mm	25mm	25mm
Tape blade	double-sided	double-sided	double-sided	double-sided
Tape material	steel	steel	steel	steel
Magnetic hook	+	+	+	+
Self-locking	+	+	+	+

Model	SW30
SKU	84575
Length of the tape blade	3m
Width of the tape blade	16mm
Tape blade	single-sided
Tape material	steel
Magnetic hook	–
Self-locking	+





## 2-in-1 Laser Tape Measures

These tools combine a laser distance meter (60m range) with a retractable steel tape (5m). The laser measures long distances accurately, while the tape is suited for quick, short measurements. They are suitable for construction, renovations, and installations where both precision and convenience are needed.

### Key features:

- Laser accuracy:  $\pm 2\text{mm}$
- 19mm wide tape for stability
- Durable housing and smooth retraction

The dual design eliminates the need to carry separate tools.



Model	SLR540	SLR545	SLR640
SKU	84581	84580	84547
Type	laser, ruler tape	laser, ruler tape	laser, ruler tape
Measuring range	0.2–40m	0.2–40m	0.05–60m
Accuracy	$\pm 3\text{mm}$	$\pm 3\text{mm}$	$\pm 2\text{mm}$
Length/width of the tape blade	5m / 19mm	5m / 19mm	5m / 18mm
Area/volume measurement	–	+	+
Magnetic hook	+	+	–
Self-locking	+	+	+
Power supply	2 AAA batteries	Li-ion battery	Li-ion battery





# Laser Meters

Unlike conventional tape measures, laser distance meters provide advanced functionality:

- Measure lengths and distances with high precision
- Perform real-time calculations (area, volume, angles)
- Store measurement data for multi-step computations

## Professional Applications Include:

- Construction layout and material estimation
- Land surveying and cadastral documentation
- Renovation planning and space optimization

## Key Technical Advantages:

- Eliminate manual calculation errors
- Reduce measurement time for complex tasks
- Internal memory stores up to 100 measurements for later documentation.

Laser meters employ the DührerSN laser emitter enhancement technology, which ensures high visibility of the laser beam under various lighting conditions. Tools featuring this innovation are clearly identified by the DührerSN logo in catalog on our web sites.







Model	GA50	GM60	GM100
SKU	81724	84645	85313
Measuring range	0.05–50m	0.05–60m	0.05–100m
Area/volume measurement	+	+	+
Pythagorean theorem feature	+	+	+
Accuracy	±3mm	±2mm	±2mm
Angle measurement range	–	±90°	±90°
History record	16 groups	100 groups	100 groups
Total number of functions	6	10	10



Model	GD40	GD60	GD80	GD100
SKU	84643	85314	85315	84644
Measuring range	0.05–40m	0.05–60m	0.05–80m	0.05–100m
Area/volume measurement	+	+	+	+
Pythagorean theorem feature	+	+	+	+
Accuracy	±2mm	±2mm	±2mm	±2mm
Angle measurement range	–	–	–	–
Display	3 lines	3 lines	3 lines	3 lines
History record	20 groups	20 groups	20 groups	20 groups
Total number of functions	7	7	7	7





Model	GE40	GE60	GE80	GE100
SKU	83075	85319	85320	83074
Measuring range	0.05–40m	0.05–60m	0.05–80m	0.05–100m
Area/volume measurement	+	+	+	+
Pythagorean theorem feature	+	+	+	+
Accuracy	±2mm	±2mm	±2mm	±2mm
Angle measurement range	–	–	–	–
Display	4 lines	4 lines	4 lines	4 lines
History record	99 groups	99 groups	99 groups	99 groups
Total number of functions	8	8	8	8



Model	GK40	GK60	GK80	GK100
SKU	85321	83080	83081	83078
Measuring range	0.05–40m	0.05–60m	0.05–80m	0.05–100m
Area/volume measurement	+	+	+	+
Pythagorean theorem feature	+	+	+	+
Accuracy	±2mm	±2mm	±2mm	±2mm
Angle measurement range	–	–	–	–
History record	20 groups	20 groups	20 groups	20 groups
Total number of functions	6	6	6	6





Model	GS40	GS60	GS80	GS100
SKU	86257	83084	83085	83082
Measuring range	0.05–40m	0.05–60m	0.05–80m	0.05–100m
Area/volume measurement	+	+	+	+
Pythagorean theorem feature	+	+	+	+
Accuracy	±2mm	±2mm	±2mm	±2mm
Angle measurement range	–	–	–	–
History record	20 groups	20 groups	20 groups	20 groups
Total number of functions	6	6	6	6



Model	GL60	GL100	LR100	LR200
SKU	84557	84558	84652	84653
Measuring range	0.05–60m	0.05–100m	0.05–100m	0.05–200m
Area/volume measurement	+	+	+	+
Pythagorean theorem feature	+	+	+	+
Accuracy	±1.5mm	±1.5mm	±2mm	±2mm
Angle measurement range	0–180°	0–180°	0–90°	0–90°
History record	100 groups	100 groups	30 groups	30 groups
Digital viewfinder	–	–	+	+
Total number of functions	14	14	10	10





# Land Measuring Tapes and Ruler Tapes

Universal fiberglass measuring tapes in round cases are suitable for all types of long-distance measurements, including construction, renovation, material cutting, and interior decoration.

These tapes feature:

- Extended-length blade – easily retracted using a side-winding handle
- Fiberglass blade material – highly resistant to wear and stretching





Unlike standard tape measures, surveyor's tapes have an extended blade length and a sharp tip designed to secure them in the soil.

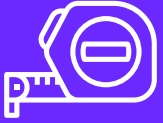
They are essential for land surveying – including boundary marking and zoning – as well as construction and landscape projects.

Tape measures employ Schmieroll lubrication technology – a proprietary system that extends product lifespan by reducing friction coefficients and increasing effective contact area between moving parts. Tools featuring this innovation are clearly identified by the Schmieroll logo in catalog on our web sites.



Model	SR30	SR50
SKU	84588	81888
Length of the tape blade	30m	50m
Width of the tape blade	15mm	15mm
Tape blade	double-sided	double-sided
Tape material	fiberglass	fiberglass





Model	SE30	SE50	SE100
SKU	84569	84570	84571
Length of the tape blade	30m	50m	100m
Width of the tape blade	13mm	13mm	13mm
Tape blade	single-sided	single-sided	single-sided
Tape material	brushed steel	brushed steel	brushed steel



Model	SH30	SH50	SH100
SKU	84572	84573	84574
Length of the tape blade	30m	50m	100m
Width of the tape blade	13mm	13mm	13mm
Tape blade	single-sided	single-sided	single-sided
Tape material	brushed steel	brushed steel	brushed steel



Model	SX20	SX30	SX50
SKU	84576	84577	84578
Length of the tape blade	20m	30m	50m
Width of the tape blade	13mm	13mm	13mm
Tape blade	single-sided	single-sided	single-sided
Tape material	brushed steel	brushed steel	brushed steel





# Measuring Wheels

Ermenrich measuring wheels accurately calculate distances on uneven or curved surfaces. The digital models provide high precision with less than 0.3% measurement error, making them suitable for:

- Road construction
- Landscaping projects
- Topographic surveys

Key features:

- Durable construction for field use
- Clear digital display
- Simple operation

Designed for professionals who require reliable distance measurements in challenging environments.

Measuring wheels employ Schmieroll lubrication technology – a proprietary system that extends product lifespan by reducing friction coefficients and increasing effective contact area between moving parts. Tools featuring this innovation are clearly identified by the Schmieroll logo in catalog on our web sites.



Model	WM10	WM20	WM30
SKU	84542	84543	84544
Measuring range	0–99999,9m	0–99999,9m	0–100000m
Accuracy	±3mm	±3mm	±3mm
Height (unfolded)	90cm	97cm	100cm
Wheel diameter	16cm	32cm	32cm
Beginning point arrow	–	+	+
Hold function	–	–	+





# Best Sellers in "Distance Measuring Tools" Category



SKU: 84584



SKU: 84583



SKU: 84588



SKU: 84547



SKU: 84575



SKU: 85321



SKU: 86256

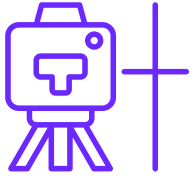


SKU: 84643



SKU: 84653

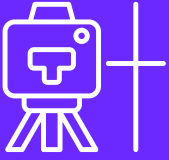




# LASER AND OPTICAL LEVELS

- Laser Levels
- Automatic Optical Levels
- Level Accessories





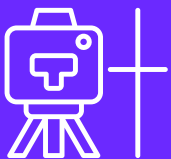
# Laser Levels

Laser levels provide high-precision alignment for vertical, horizontal, and angular measurements in construction. Key applications include:

- Marking reference lines in large areas
- Verifying floor flatness and door/window squareness
- Suitable for routine home repairs and professional trades (electrical, drywall, tiling).

Laser levels employ the DührerSN laser emitter enhancement technology, which ensures high visibility of the laser beam under various lighting conditions. Tools featuring this innovation are clearly identified by the DührerSN logo in catalog on our web sites.



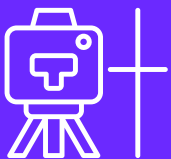


Model	LT10	LT20	LT30
SKU	84634	84635	84690
Number of lines	2	2	2
Laser beam color	red	red	green
Working distance	up to 15m	up to 15m	up to 30m
Horizontal sweep	130°	130°	130°
Brightness adjustment	4 levels	10 levels	4 levels
Self-leveling system	+	+	+
Pulse mode	+	+	+



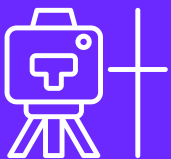
Model	LN10	LN15	LN20	LN35	LN40
SKU	84649	84650	84087	84651	84638
Number of lines	2	5	4	16	5
Laser beam color	green	green	green	green	green
Working distance	up to 30m	up to 30m	up to 30m	up to 30m	up to 30m
Horizontal sweep	130°	360°	360°	360°	360°
Brightness adjustment	4 levels	4 levels	4 levels	4 levels	4 levels
Self-leveling system	+	+	+	+	+
Pulse mode	+	+	+	+	+





Model	LV20	LV30	LV40	LV50	LV60	LV70
SKU	84654	84648	84633	84086	84088	85571
Number of lines	6	5	8	12	12	16
Laser beam color	green	green	green	green	green	green
Working distance	up to 30m	up to 30m	up to 30m	up to 30m	up to 30m	up to 30m
Vertical sweep	360°	360°	360°	360°	360°	360°
Horizontal sweep	360°	360°	360°	360°	360°	360°
Brightness adjustment	4 levels	4 levels	4 levels	4 levels	4 levels	4 levels
Self-leveling system	+	+	+	+	+	+
Pulse mode	+	+	+	+	+	+





# Automatic Optical Levels

An optical level is a precision instrument designed to measure elevation differences between two distant points. It is essential for outdoor construction and landscaping projects, such as:

- Foundation layout
- Fence installation
- Greenhouse assembly
- Terrain grading

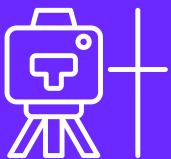
It can also measure horizontal angles and target distances. To measure with the optical level, you will need a leveling rod and tripod.

Automatic optical levels employ Schmieroll lubrication technology – a proprietary system that extends product lifespan by reducing friction coefficients and increasing effective contact area between moving parts. Tools featuring this innovation are clearly identified by the Schmieroll logo in catalog on our web sites.



Model	PL30	PL40
SKU	84090	84658
Magnification	32x	32x
Working distance	120m	120m
Compensator	air-damped compensator	pendulum compensator with magnetic damping system
Body material	ABS plastic	aluminum
Adaptable to a tripod	M16 or 5/8"	M16 or 5/8"





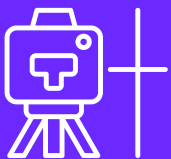
# Accessories for Laser Levels and Optical Levels

Model	GG30	RG30
SKU	83089	83090
Type	laser eyeglasses	laser eyeglasses
Laser beam protection, color	green	red
Light filters	UV filter	UV filter
Side protection	+	+



Model	LR20	LR30
SKU	84655	83088
Type	laser receiver	laser receiver
Laser beam color	red, green	red, green
Working distance	≤50m	≤50m
Bubble level	2 horizontal	2 horizontal
Auto power off	+	+
Power supply	built-in 1000mAh Li-ion battery, 3.7V	9V battery
Battery life, h	20	30
Leveling accuracy, mm	2 (high precision mode) 3 (low precision mode)	–



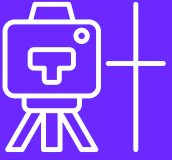


Model	TWR3	TWR5
SKU	84093	84094
Type	telescopic tower ruler	telescopic tower ruler
Body material	aluminum	aluminum
Length	1.14–3m	1.21–5m
Width	4.4cm	5.2cm
Scale	double-sided	double-sided



Model	PLT30
SKU	83093
Type	tripod
Height	930–1580mm
Maximum payload	10kg
Number of sections	2
Thread	5/8"





# Best Sellers in "Laser and Optical Levels" Category



SKU: 84088



SKU: 84086

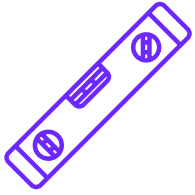


SKU: 84651



SKU: 84090





# DIGITAL LEVELS AND ANGLE FINDERS

- **Digital Levels** are designed to measure deviations of surfaces from horizontal and vertical planes. Readings can be displayed in degrees or percentages.
- **Angle Finders.** A key feature of angle finders is their ability not only to determine angles but also to perform additional calculations, such as those needed for material cutting.





## Functions:

- Measures horizontal/vertical tilt (0–360° or %)
- Calculates cut angles, compound miters
- Memory for repeated measurements



Model	LL60	LL100
SKU	83825	83826
Level type	digital, bubble	digital, bubble
Units of measurement	degrees, ft, in, m, mm, percent	degrees, ft, in, m, mm, percent
Measuring range	0–360° (4x90°)	0–360° (4x90°)
Bubble level	2	3
LCD screen	+	+
Auto power off	3 min	3 min
Hold function	+	+
Zero set function	+	+
Length	600mm	1000mm

Model	DR30	DA40
SKU	83831	83830
Type	digital angle finder	digital angle finder
Measuring range	0–360°	0–230°
Length	400mm (unfolded)	450mm
Miter cut calculation	–	+
LCD screen	+	+
Auto power off	5 min	5 min
Additional	ruler	2 bubble levels



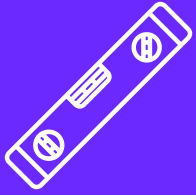


Model	LQ20	LQ30	LQ40
SKU	85691	85692	85693
Type	digital level	digital level	digital level
Units of measurement	degrees	degrees, ft, in, m, mm, percent	degrees, ft, in, m, mm, percent
Measuring range	0–360° (4x90°)	0–360° (4x90°)	0–360° (4x90°)
LCD screen	+	+	+
Auto power off	5 min	3 min	3 min
Hold function	–	+	+
Zero set function	+	+	+



Model	LY40	LY60	LY80
SKU	83827	83828	83829
Level type	digital, bubble	digital, bubble	digital, bubble
Units of measurement	degrees, ft, in, m, mm, percent	degrees, ft, in, m, mm, percent	degrees, ft, in, m, mm, percent
Measuring range	0–360° (4x90°)	0–360° (4x90°)	0–360° (4x90°)
Bubble level	2	2	2
LCD screen	+	+	+
Auto power off	3 min	3 min	3 min
Hold function	+	+	+
Zero set function	+	+	+
Memory	+	+	+
Length	450mm	600mm	800mm





# Best Sellers in "Digital Levels and Angle Finders" Category



SKU: 83825



SKU: 83826



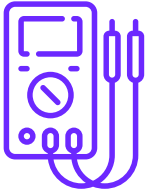
SKU: 83830



SKU: 85693



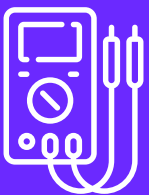
SKU: 85691



# ELECTRICAL MEASURING TOOLS

- Voltage Testers
- Digital Multimeters
- Digital Clamp Meters
- Socket Testers
- Insulation Testers
- Earth Resistance Testers



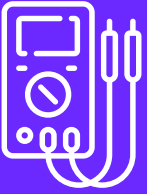


# Voltage Testers

AC non-contact voltage testers for both home and professional use. Quickly check outlets, troubleshoot wiring (detect breaks and live current), and identify phase sequence – all without direct contact.



Model	WT20	WT22	WT30	WT40	WT60
SKU	83819	85318	82954	83820	82955
Type	non-contact	non-contact	contact	non-contact	non-contact
AC voltage measuring range	60–1000V	12–1000V (high sensitivity), 48–1000V (low sensitivity)	12–300V	12–1000V	12–1000V (high sensitivity), 48–1000V (low sensitivity)
Frequency range	50/60Hz	50/60Hz	50/60Hz	50/60Hz	50/60Hz
Audible alert	+	+	+	+	+
Light alert	+	+	+	+	+
Auto power off	–	5 min	5 min	5 min	5 min



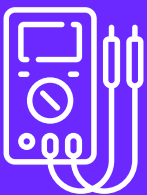
# Digital Multimeters

Professional True RMS multimeters – your all-in-one solution for electrical diagnostics.

Features:

- Complete electrical measurements (current, voltage, resistance)
- Advanced diagnostics (diode test, continuity check)
- Safety-enhancing NCV detection
- Precision AC measurements with True RMS technology





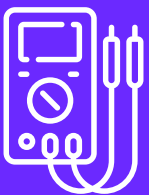
Model	TC07	TC12	TC13	TC14
SKU	86327	82979	82980	82981
Ammeter	+	–	+	–
Voltmeter	+	+	+	+
Ohmmeter	+	+	+	+
Frequency meter	–	+	+	+
Capacitance meter	–	+	+	–
Diode test	+	+	+	–
Continuity test	+	–	+	+
Phase detector	–	+	+	+
Duty cycle meter	–	–	+	–



Model	TC16	TC17	TC19	TC20
SKU	82982	82983	82984	83844
Ammeter	+	–	+	+
Voltmeter	+	+	+	+
Ohmmeter	+	+	+	+
Frequency meter	+	+	+	–
Capacitance meter	+	+	+	+
Diode test	+	+	+	+
Continuity test	+	+	+	+
Phase detector	+	+	+	–
Duty cycle meter	–	–	+	–





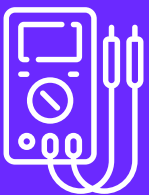


Model	TC21	TC24	TC26	TC27
SKU	82985	82986	82987	82988
Ammeter	+	+	+	+
Voltmeter	+	+	+	+
Ohmmeter	+	+	+	+
Frequency meter	+	+	+	+
Capacitance meter	+	+	+	+
Diode test	+	+	+	+
Continuity test	+	+	+	+
Phase detector	+	+	+	+
Duty cycle meter	+	+	+	+
Thermocouple	+	+	+	+



Model	TC32	TC33	TC35	TC40
SKU	82989	82990	82991	82992
Ammeter	+	+	+	+
Voltmeter	+	+	+	+
Ohmmeter	+	+	+	+
Frequency meter	+	+	+	+
Capacitance meter	+	+	+	+
Diode test	+	+	+	+
Continuity test	+	+	+	+
Phase detector	+	+	+	+
Duty cycle meter	+	+	+	+
Thermocouple	+	+	+	+





# Digital Clamp Meters

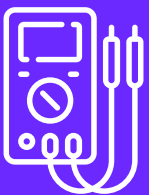
**Digital clamp meters** are designed for non-intrusive measurement of both AC and DC current without breaking wire insulation or interrupting circuit operation. True RMS-class instruments utilize advanced technologies for accurate measurement of alternating current and voltage.

**Advanced multifunction models** combine the capabilities of 6 additional instruments:

- Ohmmeter (resistance measurement)
- Voltmeter (voltage measurement)
- Frequency meter
- Capacitance meter (faradometer)
- Duty cycle meter
- Thermocouple-based temperature sensor

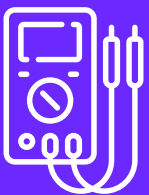
Digital clamp meters employ Schmieroll lubrication technology – a proprietary system that extends product lifespan by reducing friction coefficients and increasing effective contact area between moving parts. Tools featuring this innovation are clearly identified by the Schmieroll logo in catalog on our web sites.





Model	MK10	MK20	MK30	MK40	MK50	MK70
SKU	86322	86323	82967	82968	82969	82970
Ammeter	+	+	+	+	+	+
Voltmeter	+	+	+	+	+	+
Ohmmeter	+	+	+	+	+	+
Frequency meter	–	–	+	+	+	+
Capacitance meter	–	+	+	+	+	+
Diode test	+	+	+	+	+	+
Continuity test	+	+	+	+	+	+
Phase detector	–	–	+	+	+	+
Duty cycle meter	–	–	+	+	+	+
Thermocouple	–	–	+	+	+	+
Inrush current measurement	–	–	–	–	–	+





# Best Sellers in "Electrical Measuring Tools" Category



SKU: 82980



SKU: 82968



SKU: 82992



SKU: 86327



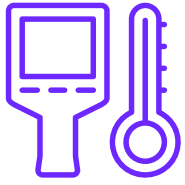
SKU: 82965



SKU: 82979



SKU: 82970



# NON-DESTRUCTIVE TESTING DEVICES

- Gas Detectors
- Thickness Gauges
- Auto Testers
- Thermal Cameras



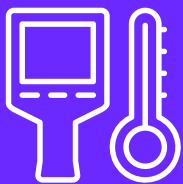


# Non-Destructive Testing Devices

NDT instruments are diagnostic measurement tools that evaluate materials or systems without damaging the test object or its coatings. Key categories include:

- Gas Detectors (Gas Leak Alarms & Analyzers)
  - Monitor gas leaks in residential/industrial environments
- Thickness Gauges
  - Measure paint, plating, or insulation thickness on metal substrates
- Automotive Diagnostic Testers
  - Enable comprehensive electrical systems diagnostics
- Thermal Imaging Cameras
  - Detect heat patterns for electrical/structural inspections



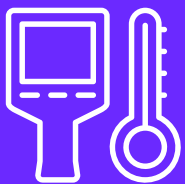


# Gas Detectors

Model	NG20	NG35	NG40	NG50	NG60
SKU	84091	85317	84092	85572	84760
Combustible gases to be detected	carbon monoxide, methane, ethane, propane, butane, ethylene, propylene, butene, acetylene, propyne, butyne, etc.	natural gas, methane, ethane, propane, butane	carbon monoxide, methane, ethane, propane, butane, ethylene, propylene, butene, acetylene, propyne, butyne, etc.	acetylene, butane, butene, butyne, etc., ethane, ethylene, methane, propane, propylene, propyne	flammable gases (methane, propane, natural gas), hydrogen sulphide, carbon monoxide, oxygen
Response time	instant	< 30s	instant	< 45s	< 45s
Alarm setpoint	low alarm: 500ppm, high alarm: 2000ppm	low alarm: 20% LEL; high alarm: 50% LEL	low alarm: 500ppm, high alarm: 2000ppm	low alarm: 500ppm, high alarm: 2000ppm	flammable gases: 20% LEL (lower), 50% LEL (upper) hydrogen sulphide: 10ppm (lower), 20ppm (upper) carbon monoxide: 50ppm (lower), 200ppm (upper) oxygen: 19.5% VOL (lower), 23.5% VOL (upper)
Power supply	2 AA batteries (6.5–7 hours of operation)	Li-ion battery (8 hours of operation)	Li-ion battery (8 hours of operation)	Li-ion battery (8 hours of operation)	Li-ion battery (16–18 hours of operation)







# Auto Testers

Model	AL30	AL40	AL45
SKU	81734	83823	83822
Type	battery tester	battery tester	battery tester
Voltage measurement	+	+	+
Cold Cranking Amps (CCA) measurement	+	+	+
Internal resistance measurement	–	+	+
Battery health status	+	+	+
Operating voltage range (DC)	6–18V	6–18V	7–15V



Model	CT30
SKU	83824
Type	auto tester
Current measuring range	0.01–19.99A
Max. load	20A / 48V DC
Max. test time	10 seconds
Body material	ABS plastic



Model	FB20
SKU	86321
Type	brake fluid tester
Moisture detection range	0–4%
Accuracy	±0.3%
Sound alert	+
Light alert	+







# Thermal Cameras

Thermal cameras are versatile tools for detecting invisible problems:

## **Electrical Inspections**

- Find overheating in wires, connections, and panels before failures occur.

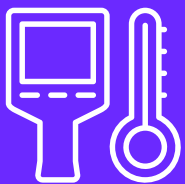
## **Building Diagnostics**

- Spot heat leaks in walls, windows, and foundations.
- Verify proper installation of:
  - Underfloor heating systems
  - Radiators & water heaters

## **Automotive & Pest Control**

- Diagnose engine/brake issues in cars.
- Locate rodents or nests hidden in structures.





Model	TV50	TV55	TV70	TV80	TV90
SKU	83843	86291	83590	86292	83591
Resolution of microbolometer matrix	32x32px	120x90px	120x90px	120x90px	256x192px
Spectral range	8–14μm	7.5–14μm	8–14μm	8–14μm	8–14μm
Frame rate	≤9	25Hz	25Hz	25Hz	25Hz
Color palettes	7	8	8	12	8
Field of view (horizontal) x(vertical)	33°, 18mrad (instantaneous)	50°x37°, 7.60mrad (instantaneous)	38°x50°, 7.39mrad (instantaneous)	50°x37°, 7.60mrad (instantaneous)	56°x42°, 3.75mrad (instantaneous)
Display resolution	240x320px	240x320px	240x320px	640x480px	240x320px
Operating mode	4 modes	1 mode	5 modes	4 modes	5 modes
Temperature measuring range	–20... +400°C	–20... +400°C	–20... +400°C	–20... +550°C	–20... +400°C
Temperature sensitivity (NETD)	< 150mK	< 40mK	< 70mK	< 40mK	< 70mK
Memory	16GB memory card (included)	built-in, 8GB, 8GB memory card (included)	built-in, 8GB	built-in, 8GB, 8GB memory card (included)	built-in, 8GB
Software	–	+	+	+	+





# Best Sellers in "Non-Destructive Testing Devices" Category



SKU: 84092



SKU: 84760



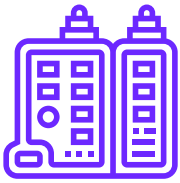
SKU: 83824



SKU: 83590



SKU: 83843

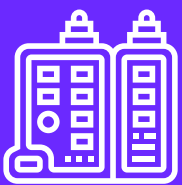


# NETWORK TESTING TOOLS

Cable line testing instruments are devices designed for installation, maintenance, and repair of computer and telephone networks. Advanced models feature multiple specialized functions required for comprehensive network diagnostics:

- NCV (Non-Contact Voltage) function – detects live wires without physical contact
- PoE test – identifies connected device type (PD/PSE) and location (end/mid-span) on the cable run
- Port Flash function – locates active network ports with connected cables on routers/switches by triggering LED blinking
- VFL (Visual Fault Locator) identifies cable breaks, sharp bends, and connector faults





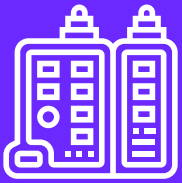
# Best Sellers in "Network Testing Tools" Category



## Ermenrich NetGeeks NP40 Digital Cable Tracker

SKU: 82550

- Cable tracing, break, and short-circuit detection
- Cable length measurement (up to 200m) and fault location (for network/telephone cables)
- Identifying the port with a connected cable (visual LED indication)
- Receiver with built-in flashlight and non-contact voltage detection (NCV) function
- Includes earbuds and carry bag



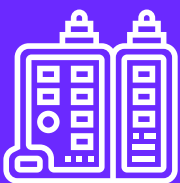
# Best Sellers in "Network Testing Tools" Category



## Ermenrich NetGeeks NP60 Optical Wire Tracker

SKU: 84551

- Cable length measurement (up to 200m), selectable units of measurement
- Cable testing: identifying power source type/location, voltage measurement, and polarity detection
- Port Flash function for locating connection ports
- Optical power measurement at 6 wavelengths
- Long-lasting 1500mAh battery



# Best Sellers in "Network Testing Tools" Category

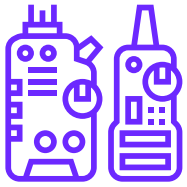


## Ermenrich Ping SM75 Cable Tester With Multimeter

SKU: 84553

- Cable identification and tracing in bundled wiring
- Break and short-circuit location
- Cable length measurement (up to 200m)
- Telephone cable polarity detection
- Cable port identification
- Stores up to 5 test results in memory
- Includes earbuds and carry bag



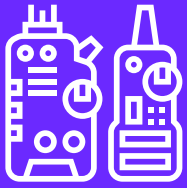


# STUD DETECTORS

- Stud Detectors (electromagnetic, metal-detecting, and hybrid systems)
- Underground Wire Locators
- Wire Trackers





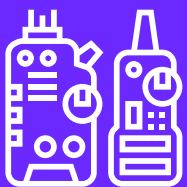


# Stud Detectors

These tools operate intuitively—emitting light/sound alerts upon finding a hidden cable or rebar. Choices range from entry-level (for occasional home use) to feature-rich professional instruments.

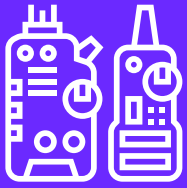
Model	SD20	SA20	SA30
SKU	83832	83833	83834
Wooden or metal stud detection	+	+	+
Maximum detection depth of metal/wooden studs	19mm	19mm	19mm, 38mm
Sound and light alerts	+	+	+
Live wire detection	–	–	+ up to 51mm
LCD screen	–	–	–
Power supply	9V battery	9V battery	9V battery





Model	SM30	SM60	SM70	SM90
SKU	83835	83836	83841	83842
Function	stud detector	stud detector	stud detector	stud detector, laser meter, digital level
LCD screen	+	+	+ 240x320px	+ 240x320px
Wooden or metal stud detection	+	+	+	+
Maximum detection depth of metal/wooden studs	13mm, 25mm, 38mm	13mm, 25mm, 38mm	38mm	38mm
Metal detection	+ 60mm	+ 60mm (non-ferrous) 80mm (ferrous)	+ 100mm (non-ferrous) 120mm (ferrous)	+ 100mm (non-ferrous) 120mm (ferrous)
Life wire detection	+ up to 51mm	+ up to 51mm	+ up to 51mm	+ up to 51mm
Power supply	9V battery	2 AA batteries	390mAh Li-ion battery	500mAh Li-ion battery





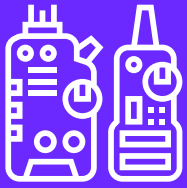
# Underground Wire Locators



## Ermenrich Ping SM150 Underground Wire Locator

SKU: 84550

- Detection of metal pipes, cables, outlets, and junction boxes
- Locating both live and de-energized cables
- Identifying cable breaks and short circuits
- Built-in voltmeter for voltage measurement
- Data display on LCD screens



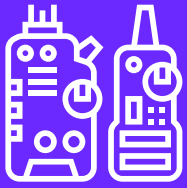
# Wire Trackers



## Ermenrich Ping SM100 Wire Tracker

SKU: 84548

- Tracing network, electrical, and telephone cables (live or de-energized)
- Cable detection up to 2m depth
- Interference suppression technology
- Adjustable transmitter/receiver sensitivity
- Battery-powered operation



# Best Sellers in "Stud Detectors" Category



SKU: 83841



SKU: 83836



SKU: 83842



# MOISTURE DETECTORS

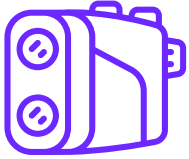
Moisture detectors are used in both large-scale industrial projects and private custom work.

Our product range includes contact and non-contact moisture detectors for wood and other construction materials.





Model	MW10	MW20	MW30	MW40
SKU	81729	84089	81730	83821
Function	moisture meter, thermometer	moisture meter, thermometer	moisture meter, thermometer	moisture meter
Type	pin-type sensor	pin-type sensor	pin-type sensor	non-contact
Materials	wood, construction materials	wood, construction materials	wood, construction materials	wood, construction materials
Measuring range	wood: 8–60%; construction materials: 0.3–2%	wood: 6–44%; concrete: 1.4–7.4%; anhydride screed: 0–4.1%; cement mortar: 0.8–5.1%; lime mortar: 0.4–3.7%; brick: 0–8.5%	wood: 6–60%; construction materials: 1.5–33%	wall: 0–20%; masonry: 0–33%; softwood: 0–60%; hardwood: 0–36%; measuring depth: 5cm
Measurement resolution	0.1%	0.1%	0.1%	0.1%
Modes	2	6	2 (+ wood density grade)	4 (+ wood density grade)
Power supply	9V battery	9V battery	2 AAA batteries	2 AAA batteries



# LASER RANGEFINDERS

Laser rangefinders enable precise measurement of distances, angles, and speeds at medium to long ranges.

Key Features:

- **Versatile Measurements**  
Accurately measure distance, angles, and speed up to 1500m – ideal for construction, surveying, and outdoor adventures.
- **6x Magnification**  
Crystal-clear optics with 6x zoom for sharp targeting in any conditions.
- **Compact & Tripod-Ready**  
Lightweight and pocket-sized, with a 1/4" tripod thread for stable long-range scans.
- **All-Terrain Performance**  
Works flawlessly on:
  - Construction sites (foundations, grading)
  - Power lines (pole spacing, sag measurement)
  - Hunting/Archery (shot distance calculation)
  - Forestry (tree height/volume estimation)







Model	LR600	LR900	LR1500	LG900
SKU	84647	85312	84085	85574
Magnification	6x	6x	6x	6.5x
Objective lens diameter (aperture)	25mm	25mm	25mm	21.8mm
Measuring range	5–600m	5–900m	5–1500m	5–900m
Angle measuring range	±60°	±60°	±60°	±90°
Units of measurement	meters, yards	meters, yards	meters, yards	km, meters, yards
Water & dust resistance	+	+	+	+





# ENVIRONMENTAL METERS

These devices monitor compliance with health/safety standards in residential and workspaces (temperature, humidity, air quality) and industrial process requirements (emissions, particulate levels, chemical exposures).

- **Infrared Thermometers**

Non-contact surface temperature measurement (−50°C to +600°C).

Enable measurements in environments where physical contact with the object is difficult or unsafe – in laboratories, industrial facilities, and when monitoring high-temperature processes.

- **Thermohygrometers**

Simultaneous temperature & humidity monitoring (0–100% RH, ±1% accuracy).

Designed for quick and easy climate monitoring in residential, office, warehouse, and industrial spaces.

- **Lux Meters**

Illuminance measurement (0–200,000 lx) for workplace compliance

- **Sound Level Meters**

Noise pollution analysis (30–130 dB, A/C weighting)

Used for sound level measurement in residential, educational, and industrial settings – for workplace compliance monitoring or sound insulation testing.

- **Digital Anemometers**

Wind speed/direction (0–30 m/s) for HVAC and safety inspections.





Model	FR40	DN10	SC20	TU20
SKU	82957	82971	83592	82959
Type	infrared thermometer	anemometer	temperature controller	thermohygrometer
Units of measurement	°C / °F	fpm, ft/s, km/h, knots, m/s, mph	–	°C / °F, % (RH)
Measuring range	–50... +550°C	0.7–30m/s; 2.5–108km/h; 2.3–98.50ft/s; 1.3–58.3 knots; 1.5–67.1mph; 137–5900fpm	–9... +99°C	–20... +60°C (temperature) –50... +60°C (dew point) 0–100% (air humidity)
Accuracy	±3°C in the range of –50 to 0°C/±6°F in the range of –58 to +32°F; ±(2.0%+2°C) in the range of 0 to +550°C/±(2.0%+4°F) in the range of +32° to +1022°F	±(2%+0.5m/s); ±(2%+1.8km/h); ±(2%+1.6ft/s); ±(2%+1 knot); ±(2%+1.1mph); ±(2%+10fpm)	–	±1°C in the range of 0°C to 45°C/±2°F in the range of +32 to +113°F; ±1.5°C/±3°F in other ranges ±3% in the range of 20% to 80%; ±4% in other ranges
Response time	< 0.5s	–	–	–
Auto power off	+	+	–	+
Hold function	+	+	–	+
Power supply	2 AAA batteries	3 AAA batteries	AC network	3 AAA batteries



# Best Sellers in "Environmental Meters" Category



SKU: 86318



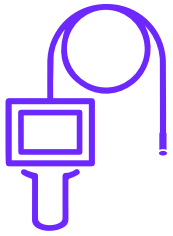
SKU: 86325



SKU: 83592



SKU: 82959



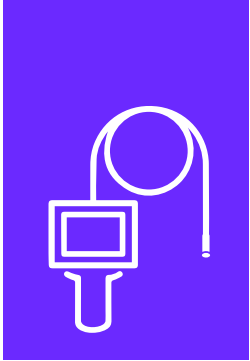
# INDUSTRIAL ENDOSCOPES

Professional inspection cameras designed for:

- Pipeline internal diagnostics
- Cable channel examinations
- Machinery internal inspections

Available in single or dual-camera configurations, all models feature integrated LED illumination for optimal visibility in dark environments. The flexible insertion cable comes in various lengths (model-dependent), ranging from 1m for compact spaces to 10m for industrial applications, allowing inspection of deeply recessed areas. Dual-camera versions provide stereoscopic imaging for enhanced defect analysis, while single-camera units offer cost-effective solutions for routine checks.





Model	VE20	VE40	VE50	VE60	VE70
SKU	83593	83837	83838	83839	83840
LCD screen	2.8"	4.3"	4.3"	4.3"	4.3"
Number of cameras	1	1	1	2	2
Camera viewing angle	70°	70°	70°	70°	70°
Cable length	10m	1m	10m	1m	10m
Water resistance (lenses and LEDs)	IP67	IP67	IP67	IP67	IP67
Image capture	–	+	+	+	+
Video record	–	+	+	+	+
Memory card	–	microSD up to 64GB	microSD up to 64GB	microSD up to 64GB	microSD up to 64GB





# RADIATION DETECTORS

## Radiation Detectors – Reliable Monitoring Solutions

- Portable & Handheld Models – Instant alpha, beta, gamma, and X-ray detection with real-time alerts.
- Wide Measurement Range for occupational and environmental safety.
- User-Friendly – Backlit LCD, history records, and timed measurement.







Model	RD20	RD50
SKU	84639	84641
Sensor	Geiger-Muller counter	Geiger-Muller counter
Radiation measurement (gamma, beta, X-ray)	+	+
Measuring range	0.05μSv to 50mSv	0.05μSv to 50mSv
Cumulative dose measuring range	0.1μSv to 100mSv	0.1μSv to 9999mSv
Number of display lines	1	3
Sound alert	+	+
Light alert	+	+
Power supply	150mAh Li-ion battery	2000mAh Li-ion battery





# WATER QUALITY TESTERS

Portable instruments for measuring key parameters:

- pH (acidity/alkalinity)
- TDS (total dissolved solids)
- Conductivity (electrical conductivity)
- Temperature
- Salinity
- Specific Gravity (S.G.)
- Hydrogen ( $H_2$ ) concentration
- ORP (oxidation-reduction potential)

Suitable for laboratory, field, and industrial use. Compare specifications below.





Model	QT20	QT30	QT40
SKU	84559	84560	84561
pH meter	0–14pH	0–14pH	0–14pH
TDS meter	0–200000ppm, 10.1–200ppt	0–200000ppm, 10.1–200ppt	0–200000ppm, 10.1–200ppt
Conductometer	1–199990μS/cm	1–200000μS/cm	1–200000μS/cm
Thermometer	0... +60°C	0... +60°C	0... +60°C
Salinometer	–	0.01–25%, 0–10000ppm, 10.1–200ppt	0.01–25%, 0–10000ppm, 10.1–200ppt
S.G. meter	–	–	1–1.222
H <sub>2</sub> meter	–	–	0–10000ppb, 0–10ppm
ORP meter	–	–	0... ±1999mV
Power supply	3 LR44 batteries	3 LR44 batteries	3 LR44 batteries



# Contacts

- +420 246 019 025
- sale-info@ermenrich.com
- www.ermenrich.com
- @ermenrich\_measuring\_tools

